

Daily Derivatives & Market Report

CONTENTS

Page No.	Particulars
2	Market Summary
3	Nifty Futures – Derivatives Snap
4	Bank Nifty Futures – Derivatives Snap
5	Activity in Nifty Options
6	What do Nifty Technical suggest
7	Derivative Analysis
8	Disclaimer

Index Trend Analysis

Pivot(Daily)	Close	S2	S1	Pivot	R1	R2	Daily	Weekly	Monthly
Nifty	11457	11350	11403	11488	11542	11626	Buy	Buy	Neutral
Sensex	38165	37798	37981	38273	38456	38748	Buy	Buy	Neutral
Nifty Futures	11472	11362	11417	11506	11562	11651	Neutral	Buy	Neutral
Bank Nifty	29583	29200	29391	29700	29891	30199	Buy	Buy	Neutral
CNX IT	15551	15365	15458	15555	15648	15745	Neutral	Neutral	Buy
CNX Midcap	17741	17571	17656	17803	17888	18035	Neutral	Neutral	Neutral
CNX Small Cap	6541	6475	6508	6567	6600	6658	Neutral	Neutral	Sell

Market Summary

Domestic Indices	Close	Points	% Chg
SENSEX	38164.6	-222.1	-0.6
NIFTY	11456.9	-64.2	-0.6
MIDCAP	15076.9	-88.8	-0.6
SMLCAP	14758.8	-65.7	-0.4
BSEFMC	11692.8	-38.1	-0.3
AUTO	18798.4	-240.8	-1.3
POWER	2000.8	16.9	0.9
REALTY	2063.7	14.4	0.7
BSE IT	15240.2	-25.9	-0.2
BANKEX	33150.8	-250.8	-0.8
OILGAS	14812.9	-188.3	-1.3
METAL	11151.9	-33.2	-0.3

Currency Futures	Close	Pre. Pts	% Chg
27-Mar-19 EUR-INR	78.05	78.26	-0.27
27-Mar-19 USD-INR	68.99	68.86	0.19
27-Mar-19 GBP-INR	90.77	91.16	-0.43
27-Mar-19 JPY-INR	62.54	61.81	1.18

Advance/ Decline	Adv	Dec	Un Ch.
NSE	644	1190	95
BSE	1001	1723	135

FII/DII Capital Mkt*	Buy	Sell	Net
FII	8150	6775	1375
DII	4456	5132	(675)

*NOTE: - FII AND DII data figure is provisional

Market Commentary

Indian equity benchmarks ended Friday's trade on a lower note, due to selling in frontline blue chip stocks, despite strong trend seen in other Asian markets. Benchmark indices saw a positive opening, as traders took encouragement with the International Monetary Fund (IMF) stating that the country has been one of the fastest growing large economies in the world, with growth averaging about 7% over the past five years. Some support also came with report that Finance Minister Arun Jaitley has made a case for setting up GST Council-like federal institutions to promote healthcare, rural development and agriculture sectors by optimally utilising resources of the centre and states. He said agriculture, rural development and healthcare is one area where the central government spends a lot of money on supporting farmers, creating infrastructure and building health centres for poor population.

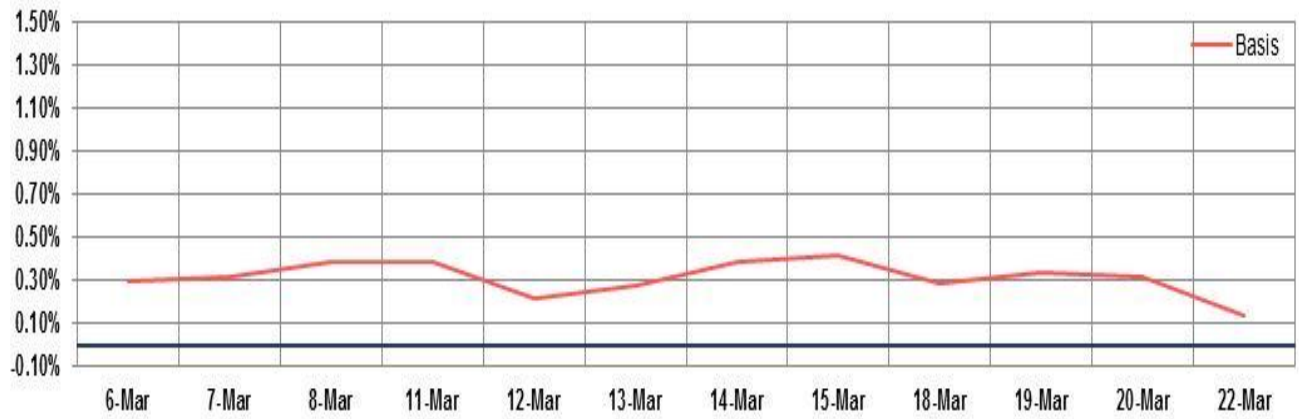
However, markets soon wiped out all of their early gains to enter into negative territory, as traders turned wary after Fitch Ratings in its latest report cut India's economic growth forecast for the next financial year starting April 1, to 6.8% from its previous estimate of 7%, on weaker than expected momentum in the economy. Some anxiety also came in with a report that India expressed concern over the widening trade deficit with China which has ballooned to over \$58 billion, with the country's new envoy saying that addressing the issue would be his top priority. The overall exposure of debt MFs to NBFCs stood at Rs 2.2 lakh crore in February, a drop of Rs 45,386 crore since July 2018 when the liquidity stress first emerged.

Market Turnover & FII Derivative Data

Market TO	Current	Previous	Net%
BSE CASH	3396	2900	17
NSE CASH	36615	35525	3
NSE FO	895226	1885084	(53)

FII Derivatives	Buy	Sell	Net
Ind. Futures	5423	4873	550
Ind. Options	161050	160250	800
Stk. Futures	15412	17297	(1885)
Stk. Options	8894	8956	(62)

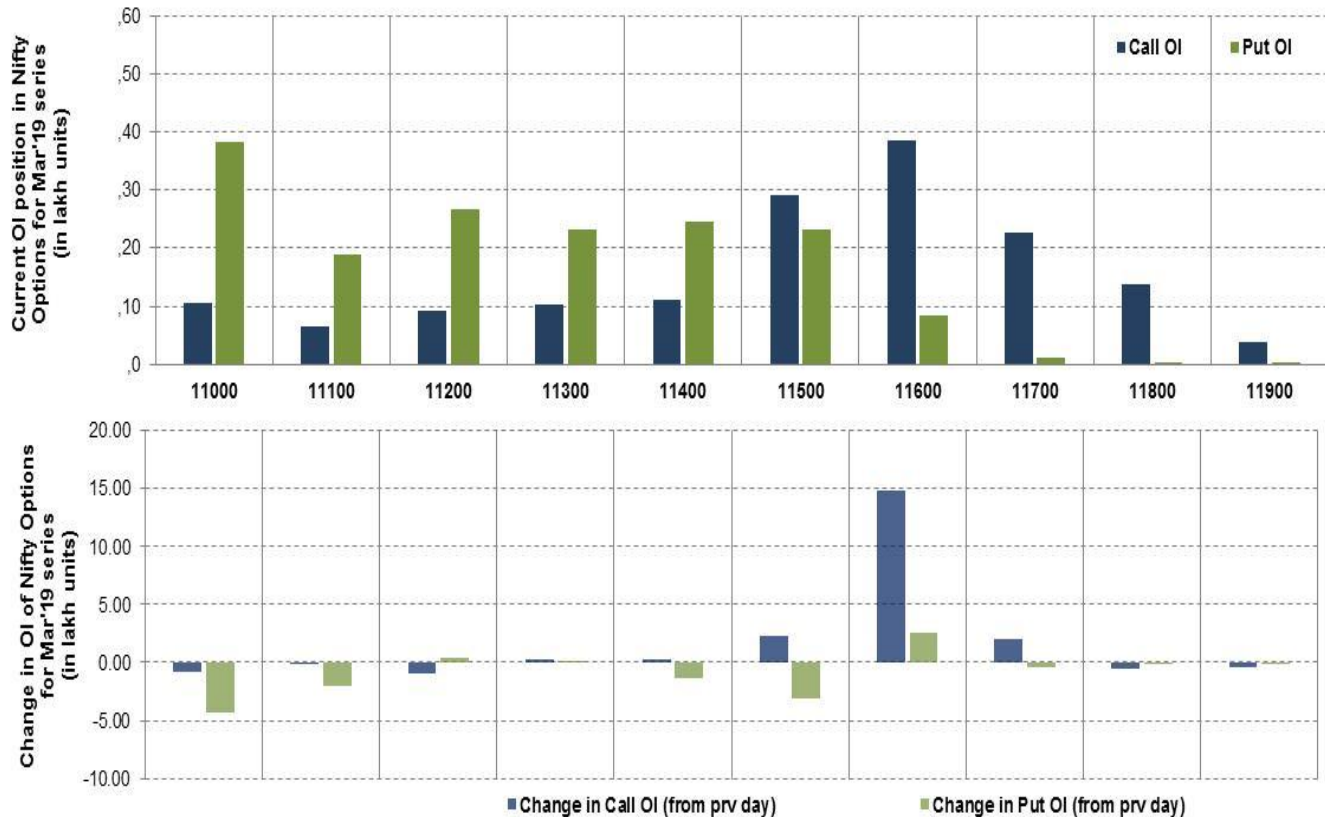
Nifty Futures



Bank Nifty Futures



Nifty Options



Note – Change in OI of Nifty Options refers to change from previous trading day
 Source-NSE, SIHL Derivatives Research (Institutional Equities)

- Among Nifty calls 11,600 SP from the Mar month expiry was the most active call with an addition of 1.48 million in open interest.
- Among Nifty puts, 11,000 SP from the Mar month expiry was the most active put with a reduction of 0.43 million open interests.
- The maximum OI outstanding for Calls was at 11,600 SP (3.85mn) and that for Puts was at 11,000 SP (3.82mn)

Nifty Technical & Indices Levels

1-Nifty 50 - 22/03/19

Avg Avg



Nifty Cash prices have settled at 11456.9 down by 0.56 percent from the previous close. On the upper side it has resistance of 11500 and 11550 levels, while lower side it has support of 11400 and 11350 levels. Intraday traders should be cautious and take position accordingly.

Fresh Longs ↑ Open Interest ↑ Price					
Scrip	Prev. OI	Cur. OI	% Chg. OI	LTP	Price % Chg
NTPC	62,481,600	72,057,600	15.33	132.95	3.83
COALINDIA	29,858,400	32,467,600	8.74	230.65	1.18
ONGC	42,390,000	44,748,750	5.56	150.65	0.90
SRF	824,000	858,000	4.13	2464.65	2.20
Short-Covering ↓ Open Interest ↑ Price					
Scrip	Prev. OI	Cur. OI	% Chg. OI	LTP	Price % Chg
HINDALCO	31,685,500	29,183,000	-7.90	209.20	0.82
JSWSTEEL	55,929,000	50,353,500	-9.97	285.80	0.88
CASTROLIND	7,051,600	6,307,000	-10.56	160.55	2.56
TATASTEEL	26,783,880	23,164,810	-13.51	519.55	0.98
Fresh Shorts ↑ Open Interest ↓ Price					
Scrip	Prev. OI	Cur. OI	% Chg. OI	LTP	Price % Chg
MOTHERSUMI	27,833,100	33,647,100	20.89	145.15	-7.81
ICICIPRULI	8,668,500	9,603,000	10.78	324.50	-4.05
IOC	50,162,000	55,188,000	10.02	153.20	-1.19
AMARAJABAT	850,500	924,000	8.64	717.15	-1.69
Long Unwinding ↓ Open Interest ↓ Price					
Scrip	Prev. OI	Cur. OI	% Chg. OI	LTP	Price % Chg
YESBANK	103,085,500	84,488,250	-18.04	252.80	-0.18
BHARATFORG	10,110,000	7,942,800	-21.44	495.30	-2.09
SUNPHARMA	48,763,000	38,099,600	-21.87	473.20	-0.68
UPL	14,133,600	10,915,200	-22.77	937.20	-0.07

Disclaimer:

The Information provided by SMS or in newsletter or in any document has been prepared by Shah Investor's Home Ltd (SIHL). The Information provided by SMS or in newsletter does not constitute an offer or solicitation for the purchase or sale of any financial instrument or as an official confirmation of any transaction. The information contained herein is from publicly available data or other sources believed to be reliable, but we do not represent that it is accurate or complete and it should not be relied on as such. SIHL or any of its affiliates/ group companies shall not be in any way responsible for any loss or damage that may arise to any person from any inadvertent error in the information contained in this report or SMS. This Information provided by SMS, reports or in newsletter is provided for assistance only and is not intended to be and must not alone be taken as the basis for an investment decision. The user assumes the entire risk of any use made of this information. Each recipient of this Information provided by SMS, report or in newsletter should make such investigation as it deems necessary to arrive at an independent evaluation of an investment in the securities of companies referred to in this information provided by SMS, report or in newsletter (including the merits and risks involved), and should consult his own advisors to determine the merits and risks of such investment. The investment discussed or views expressed may not be suitable for all investors. This information is strictly confidential and is being furnished to you solely for your information.

The information should not be reproduced or redistributed or passed on directly or indirectly in any form to any other person or published, copied, in whole or in part, for any purpose. The information provided by report or SMS is not directed or intended for distribution to, or use by, any person or entity who is a citizen or resident of or located in any locality, state, country or other jurisdiction, where such distribution, publication, availability or use would be contrary to law, regulation or which would subject SIHL and affiliates/ group companies to any registration or licensing requirements within such jurisdiction. The distribution of this Information provided by SMS or in newsletter in certain jurisdictions may be restricted by law, and persons in whose possession this Information provided by SMS or in newsletter comes, should inform themselves about and observe, any such restrictions. The information given or Information provided by SMS, report or in newsletter is as of the date of the issue date of report or the date on which SMS provided and there can be no assurance that future results or events will be consistent with this information. This information is subject to change without any prior notice. SIHL reserves the right to make modifications and alterations to this statement as may be required from time to time. However, SIHL is under no obligation to update or keep the information current.

Nevertheless, SIHL is committed to providing independent and transparent recommendation to its client and would be happy to provide any information in response to specific client queries. Neither SIHL nor any of its affiliates, group companies, directors, employees, agents or representatives shall be liable for any damages whether direct, indirect, special or consequential including lost revenue or lost profits that may arise from or in connection with the use of the information. Past performance is not necessarily a guide to future performance. The disclosures of interest statements incorporated in the Information provided by SMS, report or in newsletter are provided solely to enhance the transparency and should not be treated as endorsement of the views expressed in the report. The analyst for this report certifies that all of the views expressed in this report accurately reflect his or her personal views about the subject company or companies and its or their securities, and no part of his or her compensation was, is or will be, directly or indirectly related to specific recommendations or views expressed in this report.

About Us:

Shah Investor's Home Ltd (SIHL) is an ISO 9001:2008 Certified financial Services Company established in 1994 at Ahmadabad, Gujarat. Customer satisfaction is guaranteed through our diversified product portfolio, professional management and customer first attitude. SIHL was the first broking house in Gujarat with membership in National Securities Depository Ltd (NSDL) and was the first broking name providing services in NSE F&O in Ahmedabad. Today, SIHL ranks among the top most players in Gujarat in retail stock broking area with 45 branches, 350 franchisee across India and providing service to more than 1,25,000 clients.